

LEON CREEK

FLOW EQUALIZATION FACILITY

CATEGORY NO. 5



GRANT NO. C-481211-57

CITY OF SAN ANTONIO , TEXAS

JUNE 1987

pd va group

~~5-1~~

DRAWER ~~5-1~~

RECORD DRAWINGS

Revisions Drawn by RVH Date 10/91
THESE RECORD DRAWINGS HAVE BEEN PREPARED, IN PART, ON THE BASIS OF INFORMATION COMPILED BY OTHERS. THEY ARE NOT INTENDED TO REPRESENT IN DETAIL THE EXACT LOCATION, TYPE OF COMPONENT NOR MANNER OF CONSTRUCTION. THE ENGINEER WILL NOT BE RESPONSIBLE FOR ANY ERRORS OR OMISSIONS WHICH HAVE BEEN INCORPORATED INTO THE RECORD DRAWINGS.

SAN

ANTONIO

WASTEWATER

FACILITIES

IMPROVEMENTS

~~5-1~~
DRAWER ~~5-1~~

L-3



LC 87-6501

INDEX TO DRAWINGS

SHEET NO. DRAWING NO. SHEET TITLE
GENERAL

1 G-1 COVER SHEET
2 G-2 INDEX TO DRAWINGS
3 G-3 GENERAL NOTES, LEGEND, LOCATION MAP
4 G-4 PROCESS SCHEMATIC
5 G-5 HYDRAULIC PROFILE
6 G-6 OVERALL SITE PLAN

CIVIL

7 C-1 GENERAL SITE PLAN
8 C-2 SITE GRADING PLAN AREA 1
9 C-3 SITE GRADING PLAN AREA 2
10 C-4 SITE GRADING PLAN AREA 3
11 C-5 SITE GRADING PLAN AREA 4
12 C-6 SITE GRADING PLAN AREA 5
13 C-7 PROCESS FACILITIES SITE PLAN
14 C-8 ACCESS ROAD PLAN
15 C-9 ACCESS ROAD PLAN
16 C-10 PAVEMENT AND HEADWALL DETAILS
17 C-11 YARD PIPING PLAN AREA 1
18 C-12 YARD PIPING PLAN AREA 2
19 C-13 YARD PIPING PLAN AREA 3
20 C-14 YARD PIPING PLAN AREA 4
21 C-15 YARD PIPING PLAN AREA 5
22 C-16 YARD PIPING PROFILES
23 C-17 YARD PIPING PROFILES
24 C-18 YARD PIPING PROFILES
25 C-19 YARD PIPING PROFILES

CIVIL / STRUCTURAL

26 C/S-1 EQUALIZATION BASIN PLAN
27 C/S-2 JOINT LAYOUT AND DETAILS
28 C/S-3 SUBGRADE DRAINAGE SYSTEM
29 C/S-4 PIER, COLUMN AND DIMENSION PLAN
30 C/S-5 PIER AND COLUMN DETAILS
31 C/S-6 EQUALIZATION BASIN DETAILS
32 C/S-7 DIVERSION STRUCTURE NO. 1
33 C/S-8 DIVERSION STRUCTURE STRUCTURAL DETAILS
34 C/S-9 EQUALIZATION BASIN PRE-AERATION
35 C/S-10 EQUALIZATION BASIN PRE-AERATION SECTIONS
36 C/S-11 EQUALIZ. BASIN PRE-AERATION STRUCTURAL DETAILS
37 C/S-12 PROCESS AIR BLOWER PAD
38 C/S-13 PARSHALL FLUME / DIVERSION STRUCTURE NO. 2
39 C/S-14 RETURN FLOW PUMP STATION
40 C/S-15 RETURN FLOW PUMP STATION STRUCTURAL DETAILS
41 C/S-16 MAGNETIC FLOWMETER VAULT
42 C/S-17 EXIST. HEADWORKS MODIFICATION PLAN
43 C/S-18 EXIST. HEADWORKS MODIFICATION DETAILS
44 C/S-19 EXIST. HEADWORKS MODIFICATION DETAILS
45 C/S-20 DEMOLITION PLAN

46 C/S-21 HEADWORKS DEMOLITION AND MODIFICATION DETAILS
47 C/S-22 HEADWORKS PRE-AERATION PLAN
48 C/S-23 HEADWORKS PRE-AERATION SECTIONS
49 C/S-24 HEADWORKS PRE-AERATION STRUCTURAL DETAILS
50 C/S-25 ODOR CONTROL FACILITY PLAN
51 C/S-26 ODOR CONTROL FACILITY DETAILS
52 C/S-27 ODOR CONTROL FACILITY DETAILS
53 C/S-28 AIR JUMPER PUMP STATIONS
54 C/S-29 ODOR CONTROL PROCESS SCHEMATIC
55 C/S-30 ODOR CONTROL FACILITY FOUNDATION PLAN
56 C/S-31 ODOR CONTROL FACILITY ROOF PLAN
57 C/S-32 ODOR CONTROL FACILITY STRUCTURAL DETAILS
58 C/S-33 ODOR CONTROL FACILITY STRUCTURAL DETAILS
59 C/S-34 BLEND TANK STRUCTURAL
60 C/S-35 BLEND TANK STRUCTURAL DETAILS
61 C/S-36 FLOWMETER VAULTS
62 C/S-37 MISCELLANEOUS STRUCTURES
63 C/S-38 MISCELLANEOUS STRUCTURES

STANDARD DETAILS

64 D-1 STANDARD DETAILS
65 D-2 STANDARD DETAILS
66 D-3 STANDARD DETAILS
67 D-4 STANDARD DETAILS
68 D-5 STANDARD DETAILS

INSTRUMENTATION / CONTROLS

69 I-1 LEGEND
70 I-2 OVERALL SITE PLAN
71 I-3 PROCESS FACILITIES AREA
72 I-4 BASIN AREA DETAILS
73 I-5 PROCESS & INSTRUMENTATION DIAGRAMS SHT. 1
74 I-6 PROCESS & INSTRUMENTATION DIAGRAMS SHT. 2
75 I-7 CONTROL PANEL ELEVATIONS & SCHEDULES
76 I-8 LOOP DIAGRAMS SHEET 1
77 I-9 LOOP DIAGRAMS SHEET 2
78 I-10 ODOR CONTROL DIAGRAMS
79 I-11 BLEND TANK INSTRUMENTATION & CONTROLS

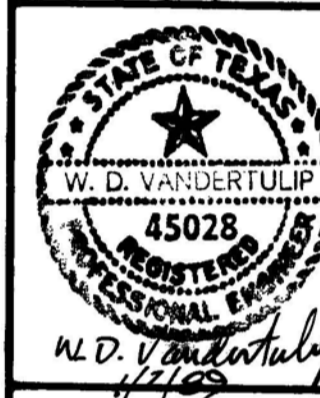
ELECTRICAL

80 E-1 SITE PLAN APPROACH ELECTRICAL
81 E-2 PARTIAL PLAN/PROCESS FACILITIES ELECTRICAL
82 E-3 ONE LINE DIAGRAMS/MOTOR CONTROL & SWITCHGEAR
83 E-4 ONE LINE DIAGRAMS/MOTOR CONTROL & SWITCHGEAR
84 E-5 ELECTRICAL DETAILS
85 E-6 ELECTRICAL DETAILS
85a E-7 MOTOR CONTROL CENTER
85b E-8 ELECTRICAL DETAILS
85c E-9 DUCT BANK LAYOUT

App. Drawing No. G-2
Revisions
4/90 ADDED APPENDUM NO. 2
No. Date

pd va
group

Date
Designed by
Drawn by
Checked by
Scale



WASTEWATER
FACILITIES
IMPROVEMENTS
San Antonio

LEON CREEK
FLOW EQUALIZATION FACILITY
INDEX TO DRAWINGS

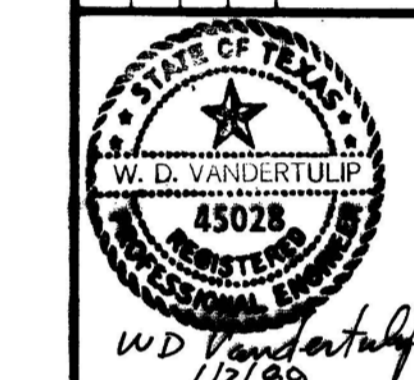
RECORD DRAWINGS

Revisions Drawn by RVH Date 10/91
THESE RECORD DRAWINGS HAVE BEEN PREPARED, IN PART, ON THE BASIS OF INFORMATION COMPILED BY OTHERS. THEY ARE NOT INTENDED TO REPRESENT IN DETAIL THE EXACT LOCATION, TYPE OF COMPONENT NOR MANNER OF CONSTRUCTION. THE ENGINEER WILL NOT BE RESPONSIBLE FOR ANY ERRORS OR OMISSIONS WHICH HAVE BEEN INCORPORATED INTO THE RECORD DRAWINGS.

Sheet 2 of 85

9110635
LC 87-6501

Date: NOV. 1988
 Designed by: M.L.
 Drawn by: R.V.H.
 Checked by: J.L.B.
 Scale: 1" = 100'

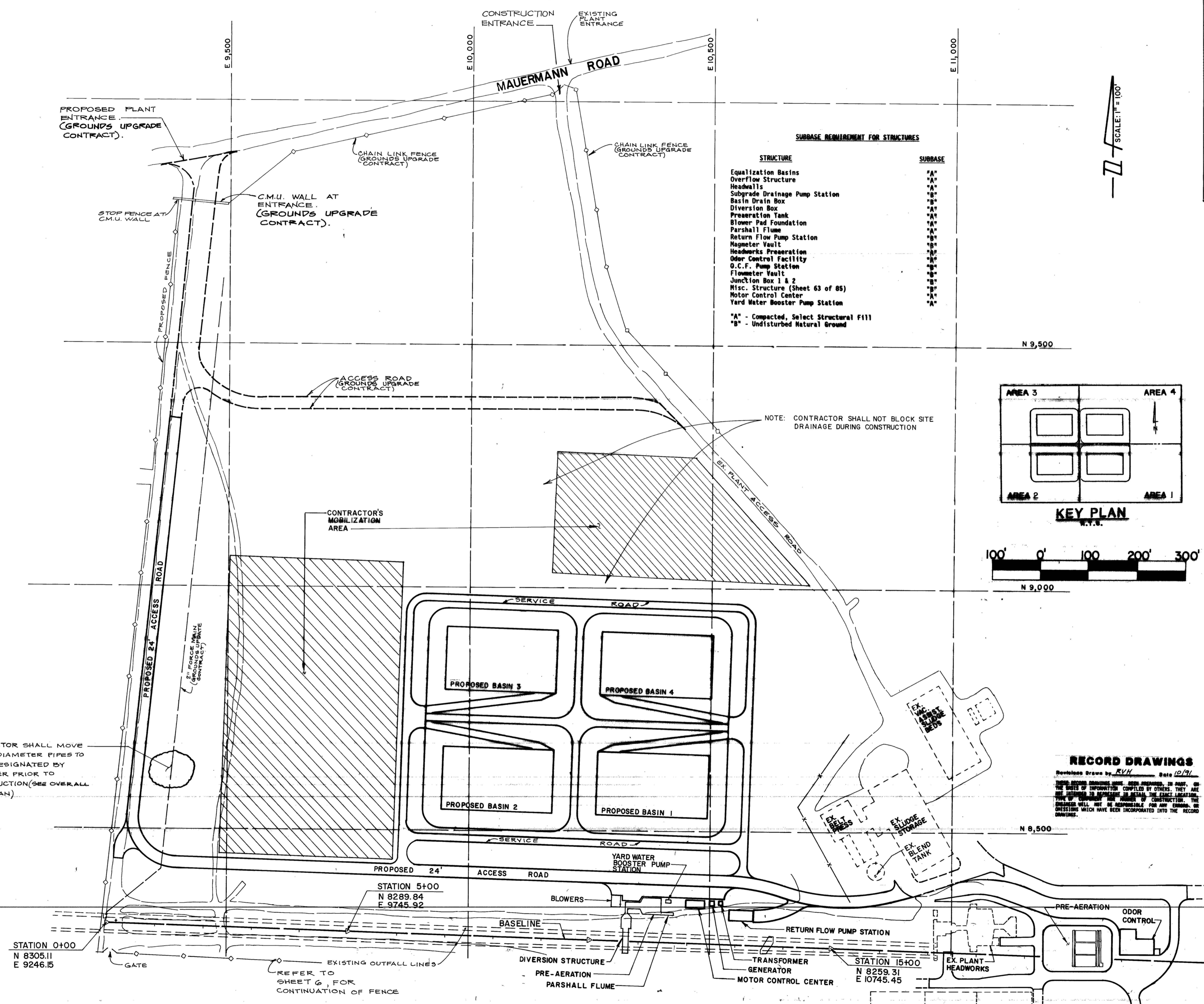


WASTEWATER FACILITIES IMPROVEMENTS

SAN ANTONIO

LEON CREEK FLOW EQUALIZATION FACILITY GENERAL SITE PLAN

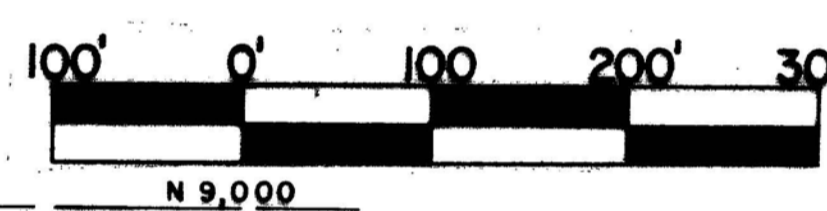
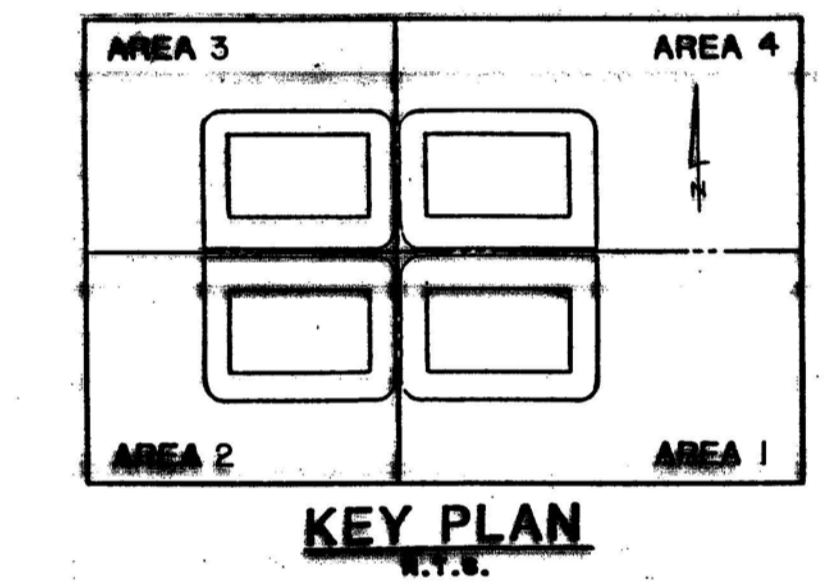
Sheet 7 of 85



SUBBASE REQUIREMENT FOR STRUCTURES

STRUCTURE	SUBBASE
Equalization Basins	"A"
Overflow Structure	"A"
Headwalls	"A"
Subgrade Drainage Pump Station	"B"
Basin Drain Box	"B"
Diversion Box	"A"
Preaeration Tank	"A"
Blower Pad Foundation	"A"
Parshall Flume	"A"
Return Flow Pump Station	"B"
Magnetometer Vault	"B"
Headworks Preaeration	"A"
Odor Control Facility	"A"
O.C.F. Pump Station	"A"
Flowmeter Vault	"B"
Junction Box 1 & 2	"B"
Misc. Structure (Sheet 63 of 85)	"B"
Motor Control Center	"A"
Yard Water Booster Pump Station	"A"

"A" - Compacted, Select Structural Fill
 "B" - Undisturbed Natural Ground



RECORD DRAWINGS

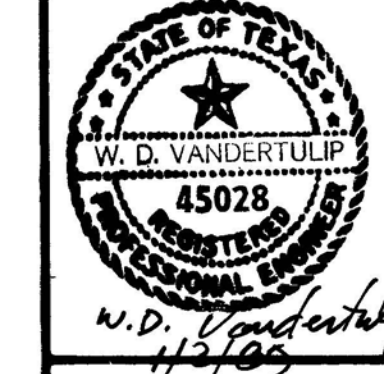
Revisions Drawn by: R.V.H. Date: 10/91

THESE RECORD DRAWINGS HAVE BEEN PREPARED, IN PART, ON THE BASIS OF INFORMATION SUPPLIED BY OTHERS. THEY ARE NOT INTENDED TO REPRESENT IN DETAIL THE EXACT LOCATION, TYPE OR DIMENSIONS OF ANY STRUCTURE OR CONSTRUCTION. THE ENGINEER WILL NOT BE RESPONSIBLE FOR ANY ERRORS OR OMISSIONS WHICH HAVE BEEN INCORPORATED INTO THE RECORD DRAWINGS.

9110640

LC 87-6501

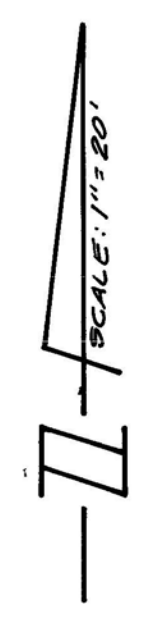
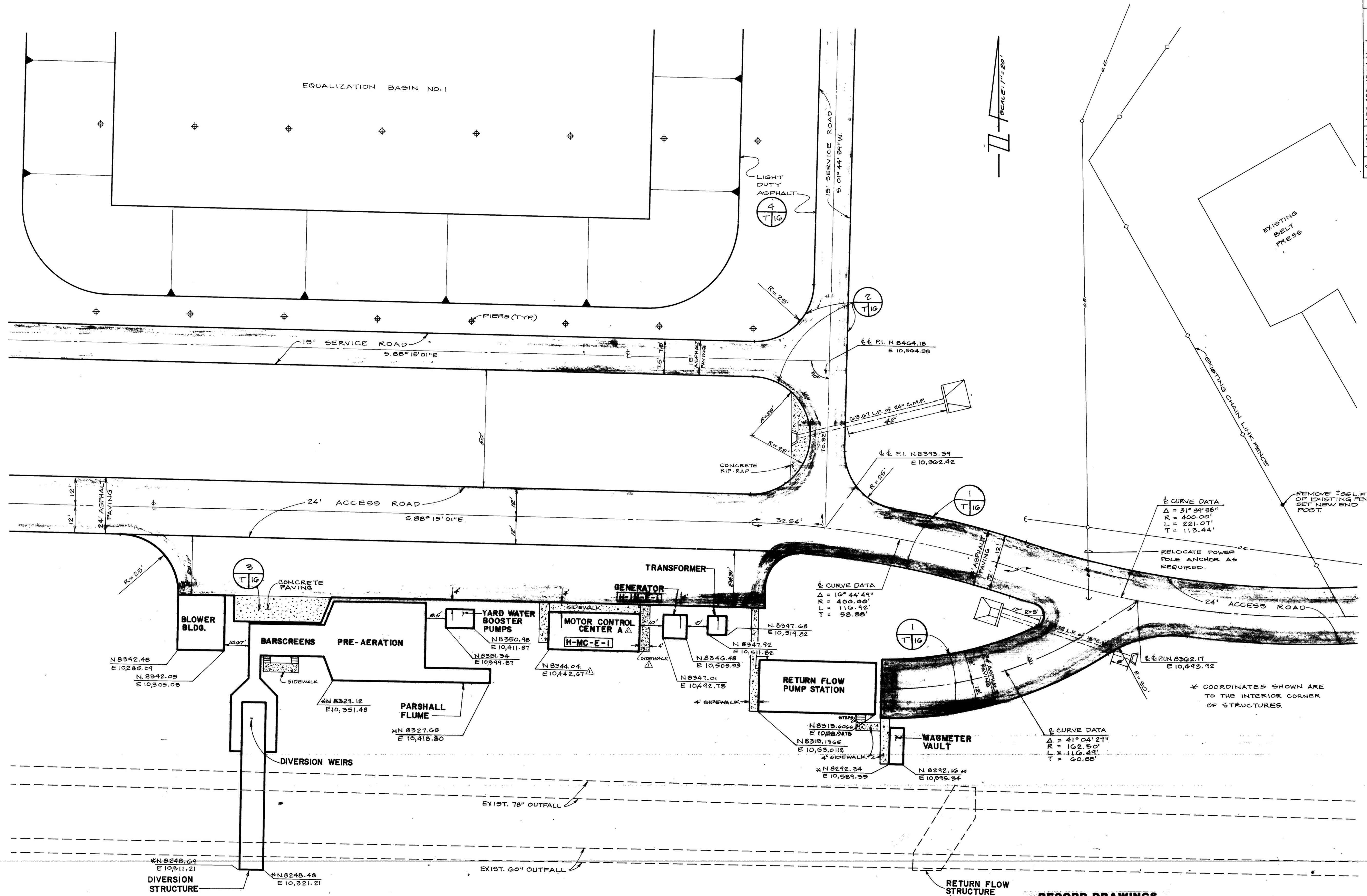
Date DEC, 1988
 Designed by M.L.
 Drawn by R.V.H.
 Checked by J.L.B.
 Scale 1" = 20'



WATER
FACILITIES
IMPROVEMENTS

San Antonio

LEON CREEK
 FLOW EQUALIZATION FACILITY
 PROCESS FACILITIES SITE PLAN



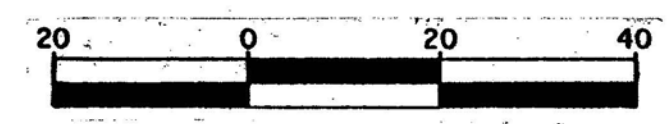
∠ CURVE DATA
 Δ = 31° 39' 58"
 R = 400.00'
 L = 221.07'
 T = 113.44'

∠ CURVE DATA
 Δ = 10° 44' 49"
 R = 400.00'
 L = 110.92'
 T = 58.88'

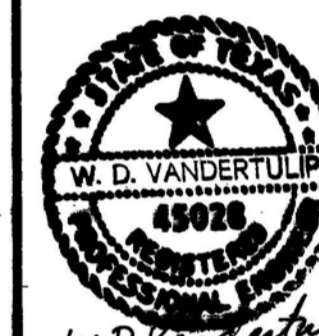
∠ CURVE DATA
 Δ = 41° 04' 27"
 R = 102.50'
 L = 110.49'
 T = 60.88'

* COORDINATES SHOWN ARE TO THE INTERIOR CORNER OF STRUCTURES.

RECORD DRAWINGS
 Revisions Drawn by: RVH Date: 10/91
 THESE RECORD DRAWINGS HAVE BEEN PREPARED, IN PART, ON THE BASIS OF INFORMATION COMPILED BY OTHERS. THEY ARE NOT INTENDED TO REPRESENT IN DETAIL THE EXACT LOCATION, TYPE OF COMPONENT OR NUMBER OF CONSTRUCTION. THE ENGINEER WILL NOT BE RESPONSIBLE FOR ANY ERRORS OR OMISSIONS WHICH HAVE BEEN INCORPORATED INTO THE RECORD DRAWINGS.



9110646
 LC 87-6501

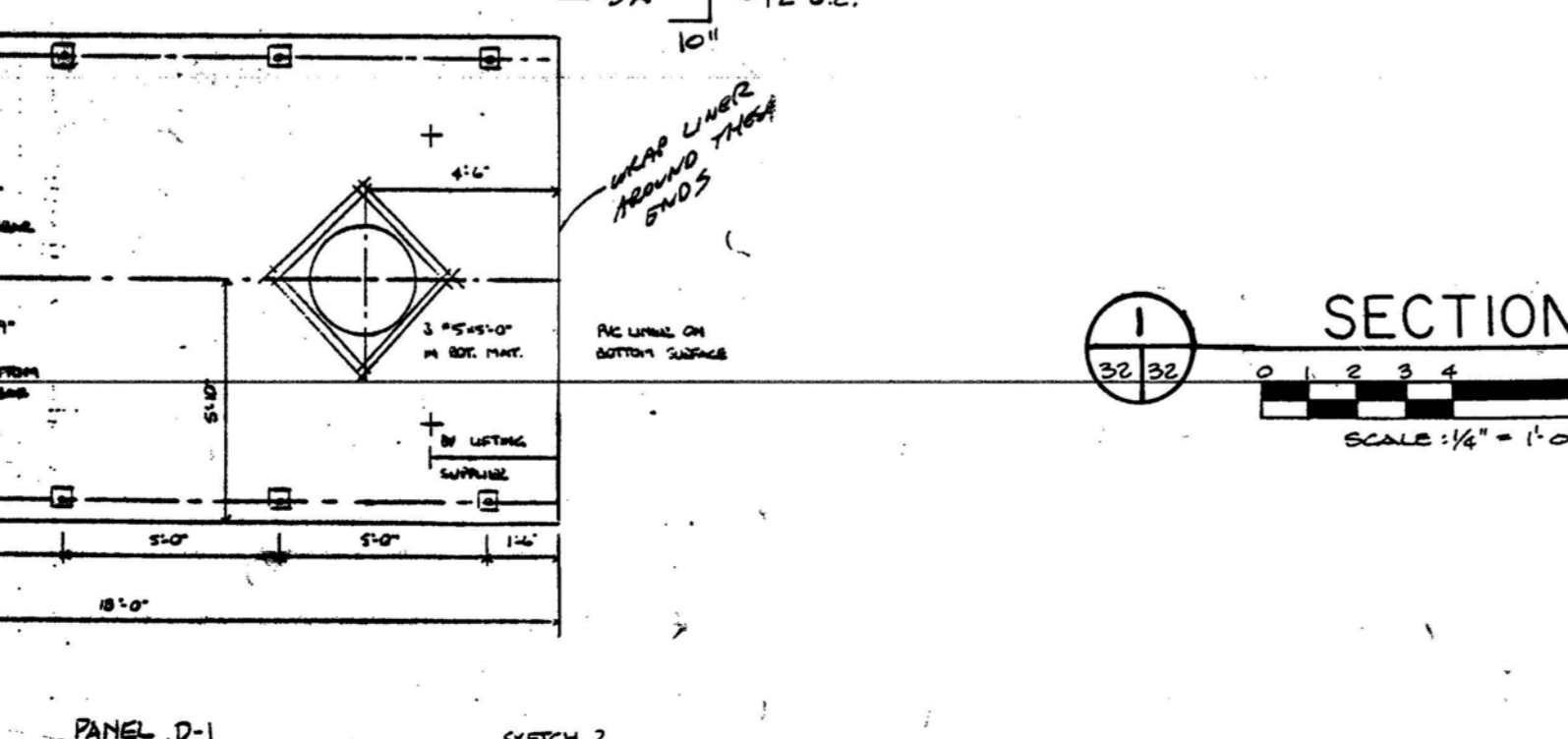
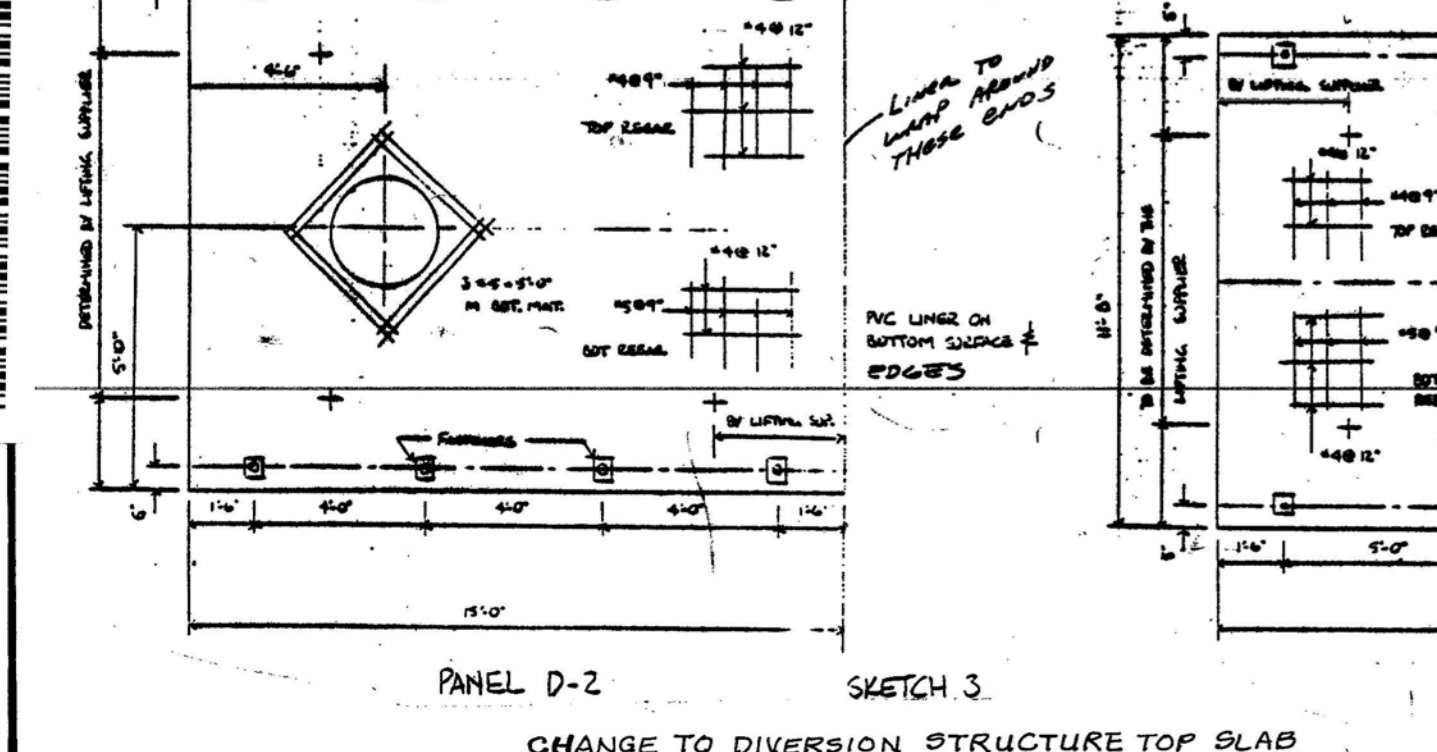
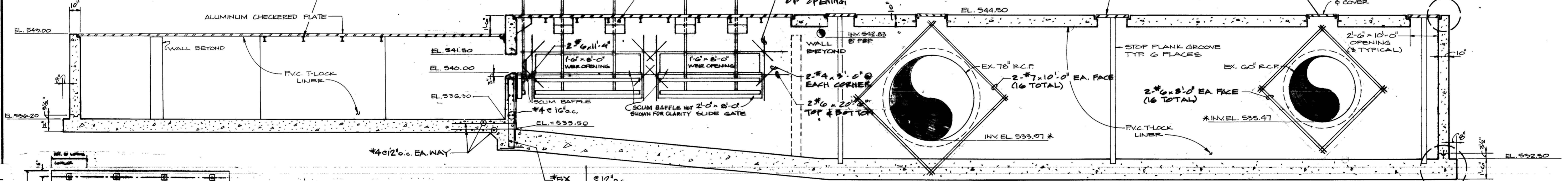
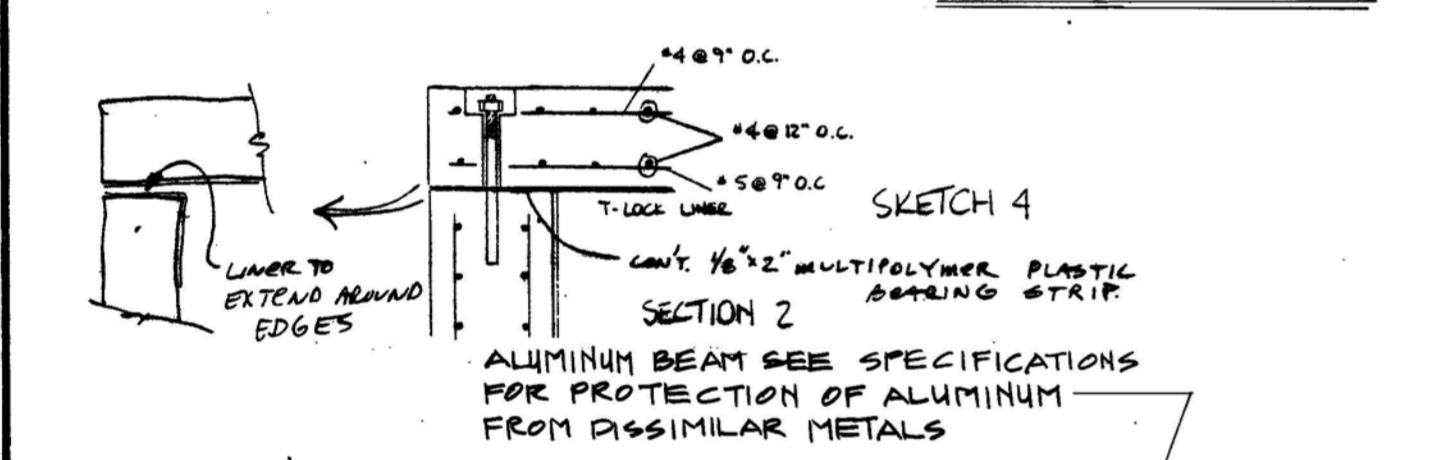
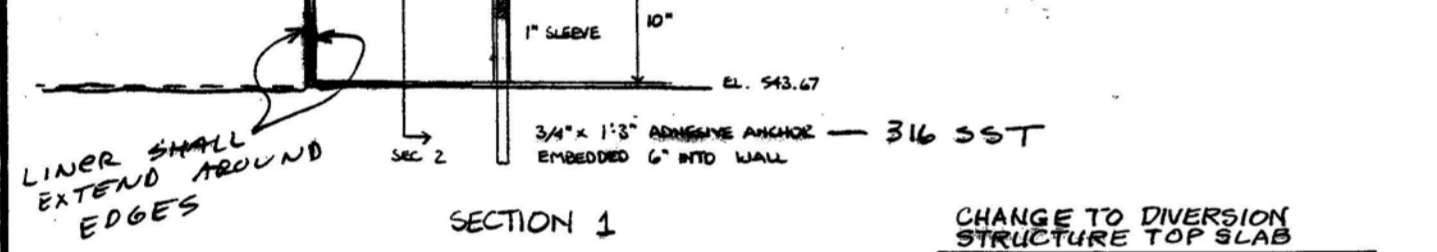
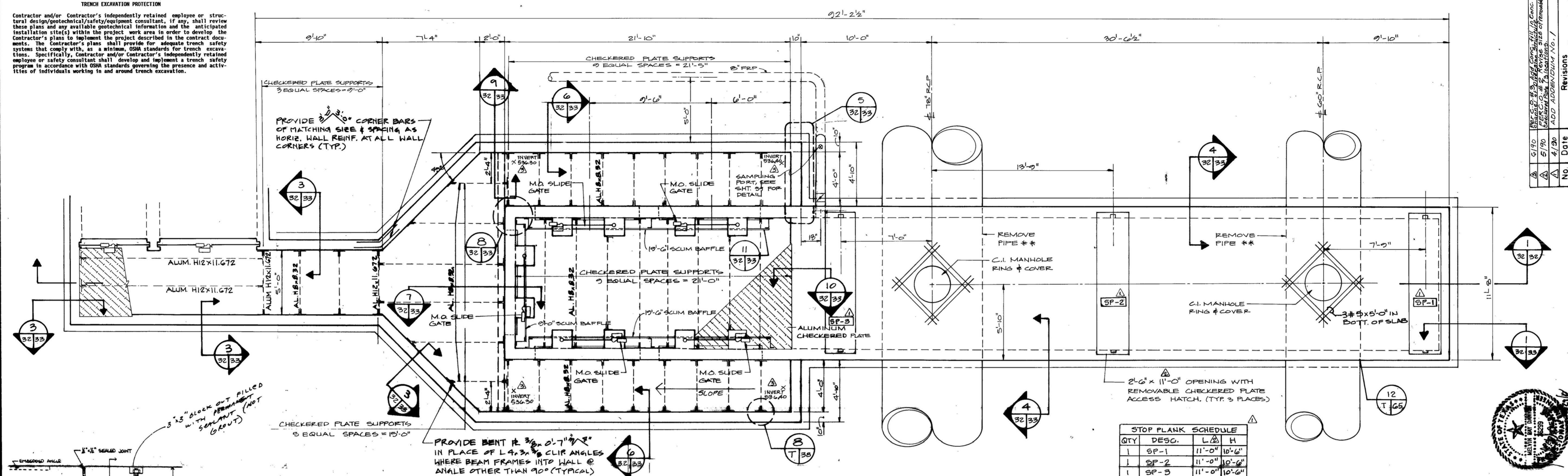


WASTE WATER FACILITIES IMPROVEMENTS

San Antonio

LEON CREEK FLOW EQUALIZATION FACILITY DIVERSION STRUCTURE NO. 1

TRENCH EXCAVATION PROTECTION
 Contractor and/or Contractor's independently retained employee or structural design/geotechnical/safety/equipment consultant, if any, shall review these plans and any available geotechnical information and the anticipated installation site(s) within the project work area in order to develop the Contractor's plans to implement the project described in the contract documents. The Contractor's plans shall provide for adequate trench safety systems that comply with, as a minimum, OSHA standards for trench excavations. Specifically, Contractor and/or Contractor's independently retained employee or safety consultant shall develop and implement a trench safety program in accordance with OSHA standards governing the presence and activities of individuals working in and around trench excavation.



RECORD DRAWINGS
 THESE RECORD DRAWINGS HAVE BEEN PREPARED, IN PART, ON THE BASIS OF DRAWINGS OR SPECIFICATIONS BY OTHERS. THEY ARE NOT INTENDED TO REPRESENT IN DETAIL THE EXACT LOCATION, TYPE OR COMPONENTS FOR PURPOSES OF CONSTRUCTION. THE ENGINEER WILL NOT BE RESPONSIBLE FOR ANY ERRORS OR OMISSIONS WHICH HAVE BEEN INCORPORATED INTO THE RECORD DRAWINGS.

NOTE: REFER TO STRUCTURAL DETAILS FOR LIMITS OF F.V.C. T-LOCK LINER.

* CONTRACTOR TO VERIFY ELEVATIONS OF EXISTING PIPES AND NOTIFY ENGINEER IF DIFFERENT THAN SHOWN.
 ** CONTRACTOR TO SUBMIT HIS PROCEDURE FOR DIVERTING FLOW PRIOR TO REMOVING EXISTING PIPE WITHIN STRUCTURE. PROCEDURE IS SUBJECT TO APPROVAL AND/OR REVISION BY THE ENGINEER.

91110664
 LC 87-6501

No.	Date	Revisions
1	12/13/88	REVISED FOR CONSTRUCTION
2	12/13/88	REVISED FOR CONSTRUCTION
3	12/13/88	REVISED FOR CONSTRUCTION
4	12/13/88	REVISED FOR CONSTRUCTION
5	12/13/88	REVISED FOR CONSTRUCTION
6	12/13/88	REVISED FOR CONSTRUCTION
7	12/13/88	REVISED FOR CONSTRUCTION
8	12/13/88	REVISED FOR CONSTRUCTION

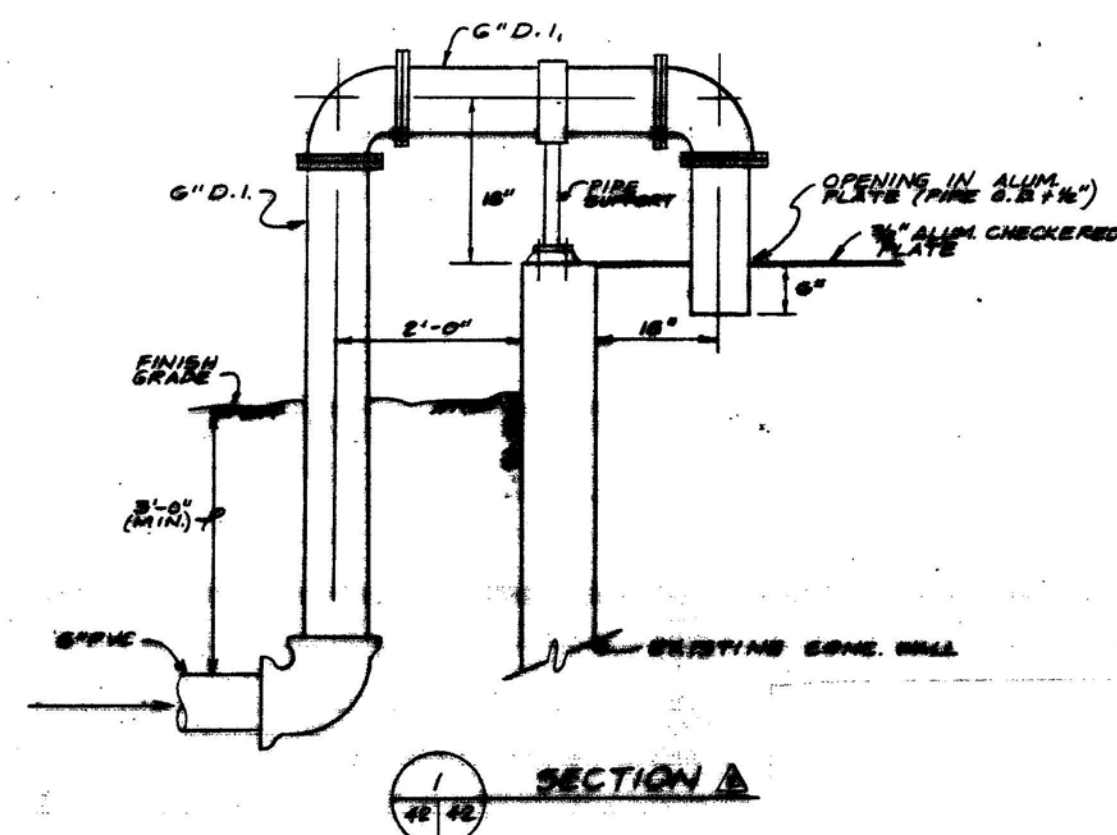
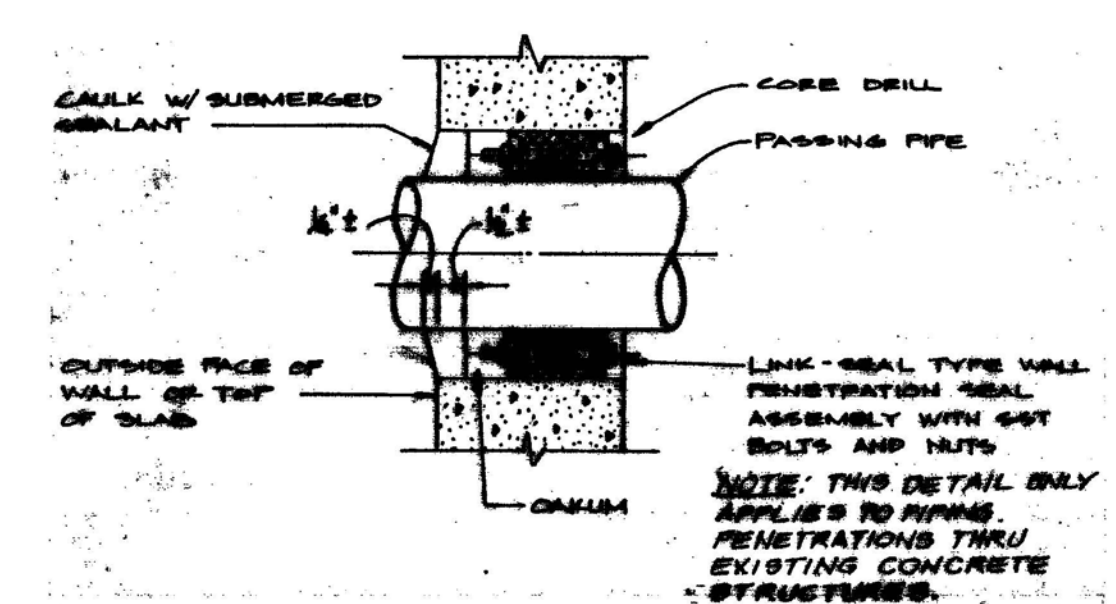
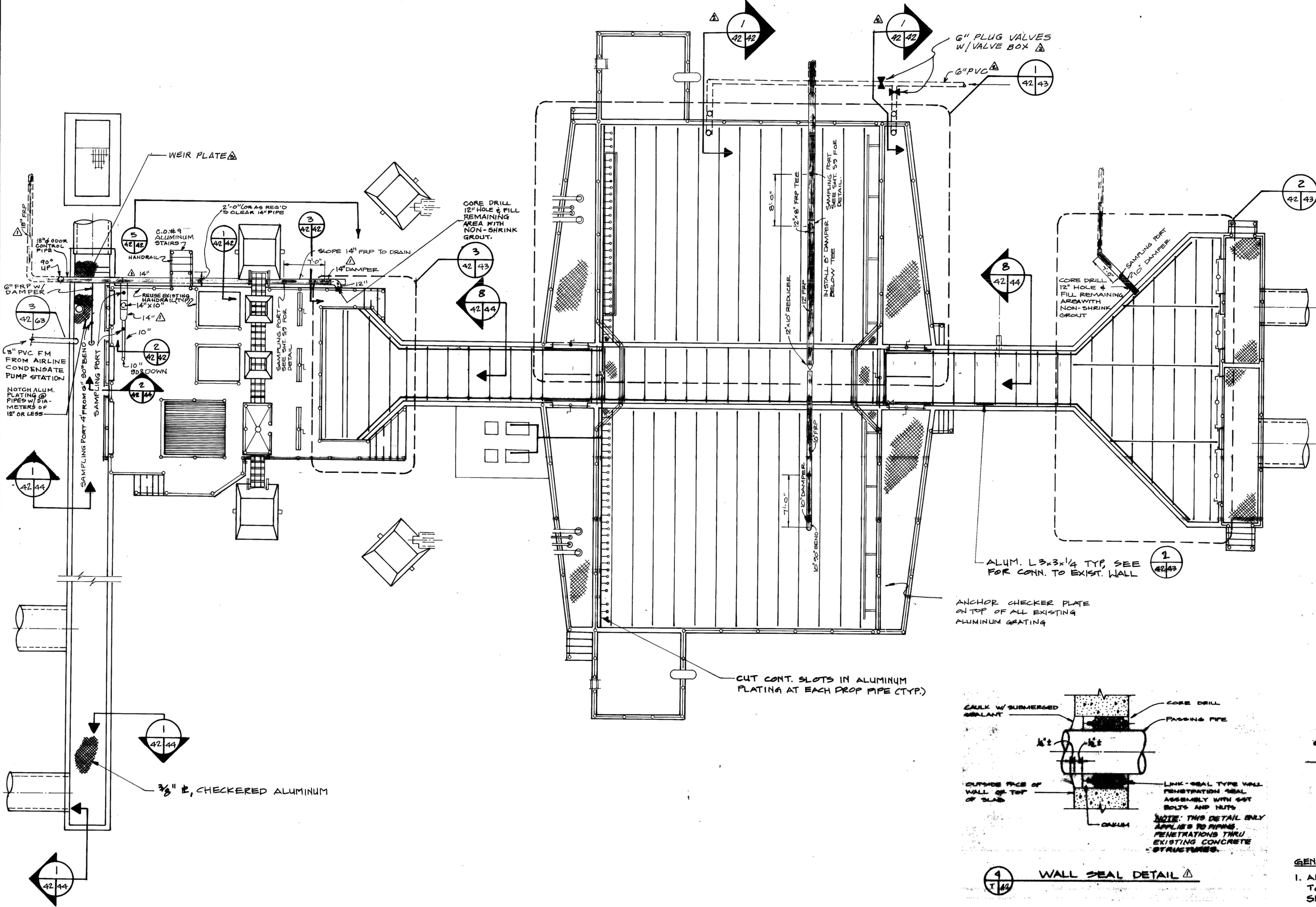
Date: DEC 1988
 Designed by J.W.B.
 Drawn by R.W.K.
 Checked by J.L.B.
 Scale: N.T.S.



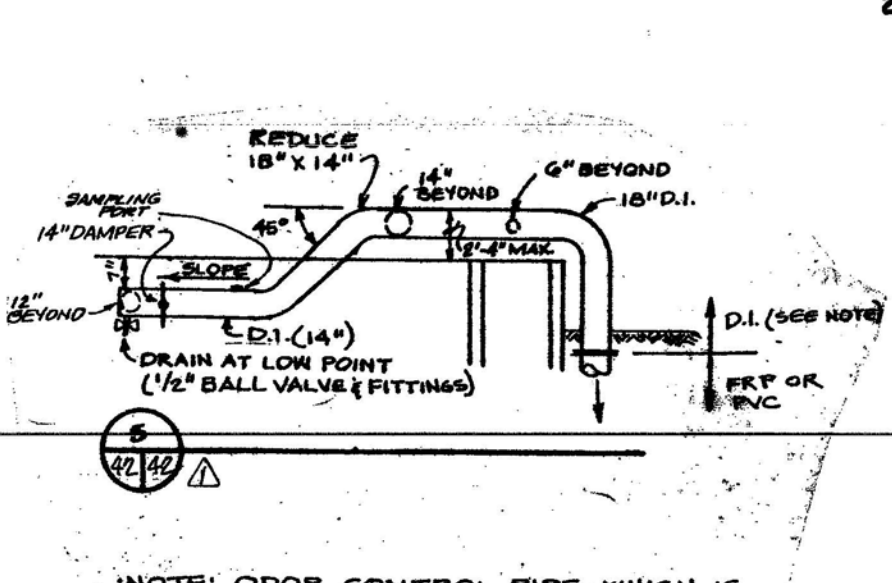
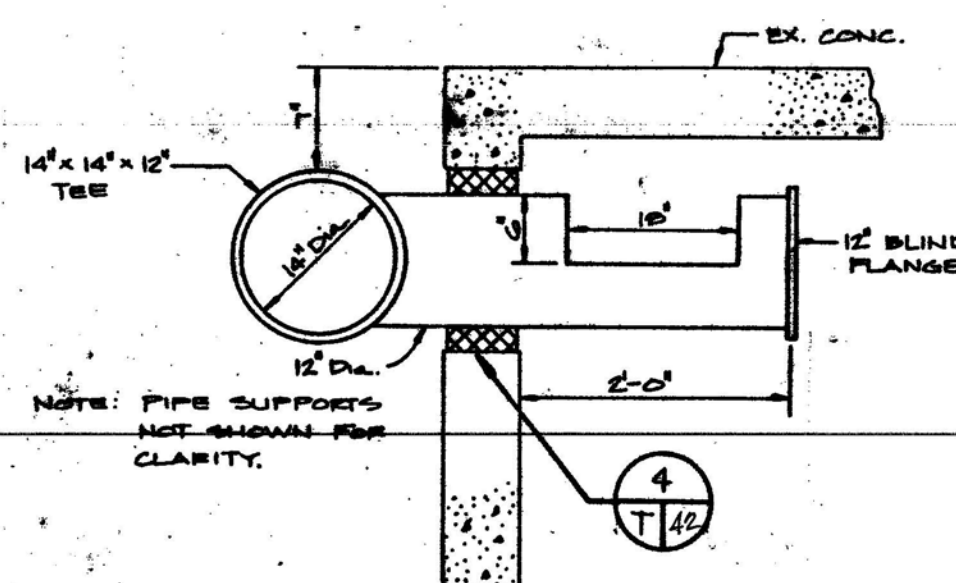
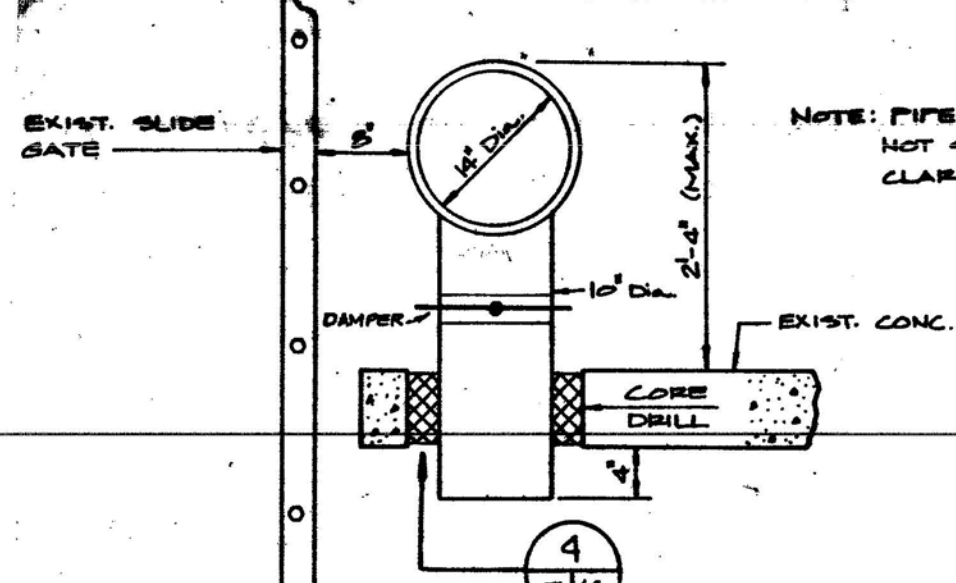
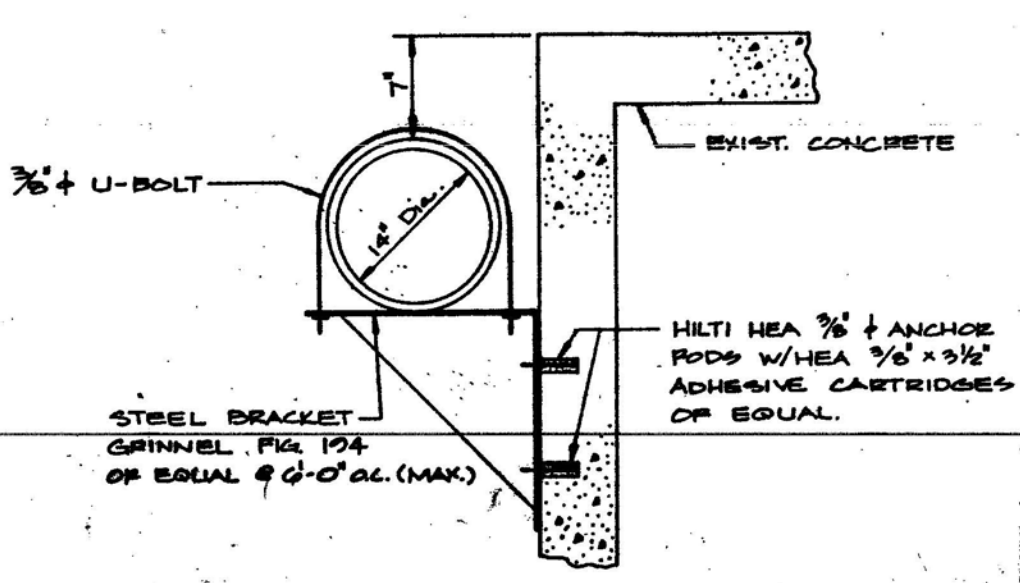
WASTEWATER
 FACILITIES
 IMPROVEMENTS

San Antonio

LEON CREEK
 FLOW EQUALIZATION FACILITY
 EXISTING HEADWORKS MODIFICATIONS
 PLAN



- GENERAL NOTES:**
1. ALUMINUM SECTIONS & CHECKERED PLATING SHALL CONFORM TO ASTM B308, TYPE 6061-T6. NUTS, BOLTS, & WASHERS SHALL BE STAINLESS STEEL.
 2. ALL ALUMINUM SURFACES TO BE IN DIRECT CONTACT WITH CONCRETE SHALL BE PAINTED WITH ONE COAT OF BITUMINOUS PAINT (10 MPFT).



RECORD DRAWINGS
 Revisions Drawn by: R.W.K. Date: 12/13/88
 THESE RECORD DRAWINGS HAVE BEEN PREPARED, IN PART, ON THE BASIS OF INFORMATION COMPILED BY OTHERS. THEY ARE NOT INTENDED TO REPRESENT IN DETAIL THE EXACT LOCATION, TYPE OF COMPONENT, OR NUMBER OF CONSTRUCTION. THE ENGINEER WILL NOT BE RESPONSIBLE FOR ANY ERRORS OR OMISSIONS WHICH HAVE BEEN INCORPORATED INTO THE RECORD DRAWINGS.